

Hotel Information

Holiday Inn Springfield

711 Dwight St.
Springfield, Massachusetts
Phone 413 - 781 - 0900
1- 800 - HOLIDAY
Fax: 413 - 750 - 3135
www.hispringfield.com

A block of rooms for the conference have been reserved at a rate of \$69.00 per night (plus state & room tax of 12.45%). To register call 413-781-0900 or email , www.hispringfield.com. Reservation deadline is 5 PM EST on February 28, 2006. When registering online use code **MWC** to receive the discount mentioned above.

Directions to the Holiday Inn

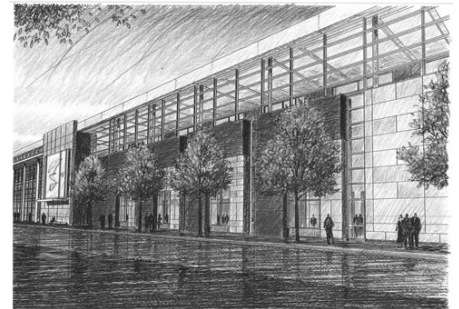


- NORTH:** Take Interstate 91 South, to Exit 8 onto I-291 East. Take exit 2A onto Chestnut Street.
- SOUTH:** Take Interstate 91 North, to Exit 8 onto I-291 East. Take exit 2A onto Chestnut Street.
- EAST:** Take the Mass Turnpike to Exit 6 onto I-291. Take exit 2B onto Dwight Street. Take left at end of ramp.
- WEST:** Take Mass Turnpike to Exit 4. Follow Interstate 91 South. Follow directions for traveling from the north.

MassMutual Convention Center

Driving directions to MassMutual Center & Parking

- NORTH:** Take Interstate 91 to Exit 4. Go 1/4 mile to Court St. Right onto Court St to light . Straight to parking on left.
- SOUTH :** Take Interstate 91 to Exit 7. Take left off ramp at light. Straight through two sets of lights between Marriott and Sheraton Hotels. Parking garage on right.
- EAST:** Take the Mass Turnpike to Exit 6. Follow Interstate I-291 to Dwight St. Exit. Turn left at end of ramp. Follow Dwight Street. Take right onto Harrison Ave. Parking on left.
- WEST:** Take the Mass Turnpike to Exit 4. Follow Interstate 91 South. Follow directions for traveling from the north.



MassMutual Center

1277 Main Street
Springfield, Mass.
413 - 755 - 1342

www.massmutualcenter.com

Directions from Hotel

Take right out of hotel parking lot. Take a left at intersection onto Dwight Street (one way) and go 7/10 miles. Parking garage is on right-hand side before MassMutual Center.

Parking

Ample parking is available at the nearby Civic Center Parking Garage, located at the corner of Dwight and Harrison, for \$5.00 per day.

